

1

2

3

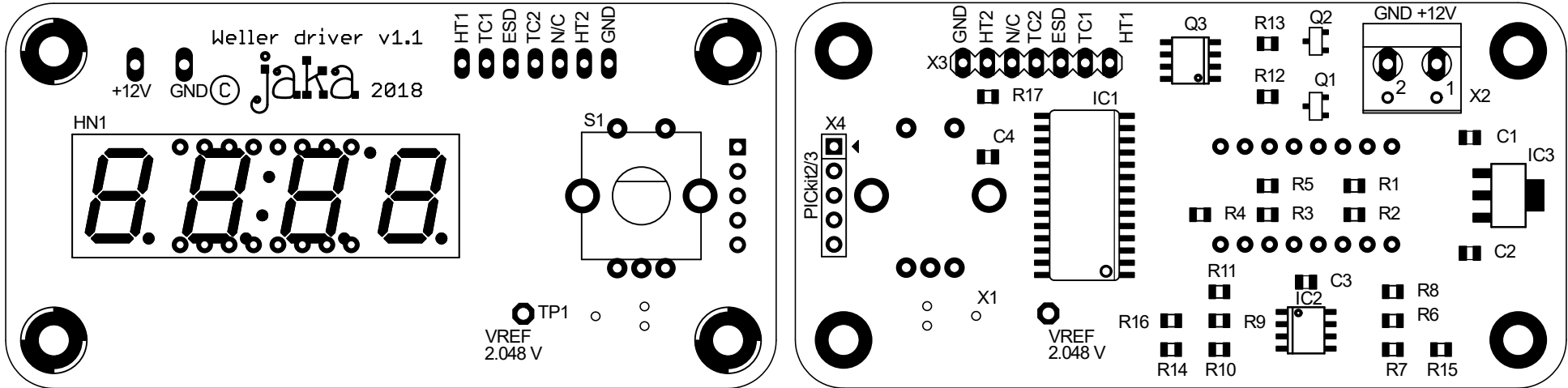
4

5

6

TOP

BOTTOM



Description	Alternative MPN	Mouser	TME	Qty	Parts
C CERAM X7R 25V 1 $\mu$ F 0805		963-TMK212B7105KG-T	GRM219R71E105KA88D	4	C1-4
R THICKFILM 390 $\Omega$ 0805		652-CR0805FX-3900ELF	CRCW0805390RFKTABC	5	R1-5
R THICKFILM 1k 1% 0805		652-CR0805FX-1001ELF	CRCW08051K00FKTABC	9	R6-7, R9-10, R12-16
R THICKFILM 240k 1% 0805		652-CR0805FX-2403ELF	SMD0805-240K-1%	2	R8, R11
FET 2N7002		757-T2N7002AKLM	2N7002.215	2	Q1, Q2
FET DMP4025LSD	FDS4935BZ	621-DMP4025LSD-13	FDS4935BZ	1	Q3
IC PIC16F1788-I/SO	PIC16F1786-I/SO	579-PIC16F1788-I/SO	PIC16F1788-I/SO	1	IC1
IC MCP6V02-E/SN		579-MCP6V02T-E/SN	MCP6V02-E/SN	1	IC2
IC UA78M05CDCYR	MCP1703-5002E/DB	595-UA78M05CDCYR	MCP1703-5002EDB	1	IC3
LED DISPLAY 4-DIGIT LTC-4627JR LITEON	TDCR1050M	859-LTC-4627JR	TDCR1050M	1	HN1
SCREW BLOCK MKDSN 2.5/2-5.08	EB21A-02-D	651-1985946	MKDSN2.5/2-5.08	1	X2
CON 5-POS PIN HEADER 2.54mm	M20-9990546	855-M20-9990546	ZL201-05G	1	X4
ROTARY ENCODER PEC12R-4225F-S0024	EC12E20-24P24C-SW OR EN12-HS22AF25	652-PEC12R-4225F-S24	PEC12R-4230F-S0024	1	S1

Mouser shared cart: <https://www.mouser.com/ProjectManager/ProjectDetail.aspx?AccessID=85a392ae45>

TME shared cart: <https://www.tme.eu/parking/d6b683e61cdd4fd062bf0df47ff3247937bbccbf.html>

Digi-Key shared cart: <https://www.digikey.com/short/j0b17f>

<http://kair.us/>

weller driver v1.1

3.11.2018

Sheet 1/1

1

2

3

4

5

6